

Standard Falcon ROV – 300m depth rated

The Falcon ROV system is configured to be free swimming. It is adaptable, reliable and can perform varied inspection tasks from CVI to CP surveys. Various tooling packages can be integrated with the Falcon (listed below). The Seaeye Falcon and Falcon DR are the choice of many leading operators for capability, versatility and the ability to get the job done. Lightweight and portable they go where they're needed - inshore, offshore, down tunnels or for flyaway operations.

Available with a choice of options, tools and accessories, Seaeye Falcons make an ideal platform for achieving numerous intricate and demanding subsea applications.



Main Details

| | |
|-------------------------|---|
| ROV : | Remote Operated Vehicle |
| Owner | RS DIVING GBR |
| Serial No. | |
| Product | ROV SEAEYE FALCON – 300m rated |
| Producer | Saab Seaeeye Ltd 20 Brunel Way, Segensworth East, Fareham, Hampshire, PO15 5SD, United Kingdom Tel: +44 (0) 1489 898000 Fax: +44 (0) 1489 898001 e-mail: rovs@seaeeye.com |
| Supervising authorities | D_TÜV, Germanischer Lloyd |

Technical Details

| | |
|------------------------|--------------------|
| Length | 1000 mm |
| Length of ante chamber | 1000 mm |
| Height | 545 mm |
| Width | 600 mm l |
| Thrust Fwd | 48 kg |
| Thrust Lateral | 28 kg |
| Thrust Vertical | 12 kg |
| Weight | 65kg |
| | Payload 10 - 15 kg |

Video Overlay includes as standard

| | |
|--|-----------------------------------|
| | Compass Heading |
| | Depth in metres or feet |
| | Camera tilt platform position |
| | Auto function status |
| | Date and Time |
| | Turn Counter |
| | free designable user screens |
| | Facility to export data to survey |
| | CP reading (optional) |
| | Odometer Count (optional) |

Power requirements

| | |
|--|-------------------------------|
| | 220-240Vac single phase 16amp |
|--|-------------------------------|

Standard Falcon supplied with

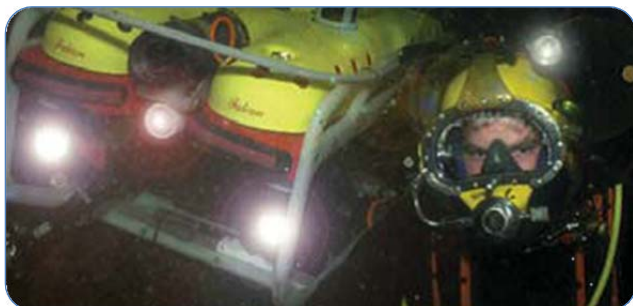
| | |
|-----------------------------------|--|
| 5 x | MCT1 thrusters |
| 1 x | Color camera |
| 1 x | Monochrome camera |
| 1 x | Super Sea King Sonar |
| 1 x 300m; 1x200m and 1x100m | low drag umbilical |
| | full LED Light, incl. 3 rd LED Lamp |
| | Gripstick incl. Rope Cutter |

Standard surface equipment

| | |
|-----|--|
| 1 x | Power supply unit including Pilot Monitor and Hand Control Unit |
| 1 x | Desktop System for Video backup, video editing, Survey and additional tasks including monitors |
| 2 x | touchscreen |
| 1 x | Trackball |
| | USB Video Grabbers |
| | Wireless Router |
| | various software |
| 1 x | digital video recorder |
| | fully network capable (e.g. wireless streaming of ROV Pictures in real-time, complete network access) |
| | deck cam and wireless network camera for video surveillance |
| 1 x | Laptop as complete backup system |
| | Remote spares package and toolset |

Special futures for RS Diving

| | |
|--|--|
| | 300m 11mm cable / 20m decks lead |
| | Umbilical hand winch |
| | Lock Latch system |
| | LED lamp |
| | Rear camera |
| | Manipulator 3 yaw function & five function |
| | Tritech superking Sonar |
| | Normal spare part maintenance |
| | 100m spare umbilical |



LED lamp



Five Function Manipulator Skid



Standard Surface Equipment